

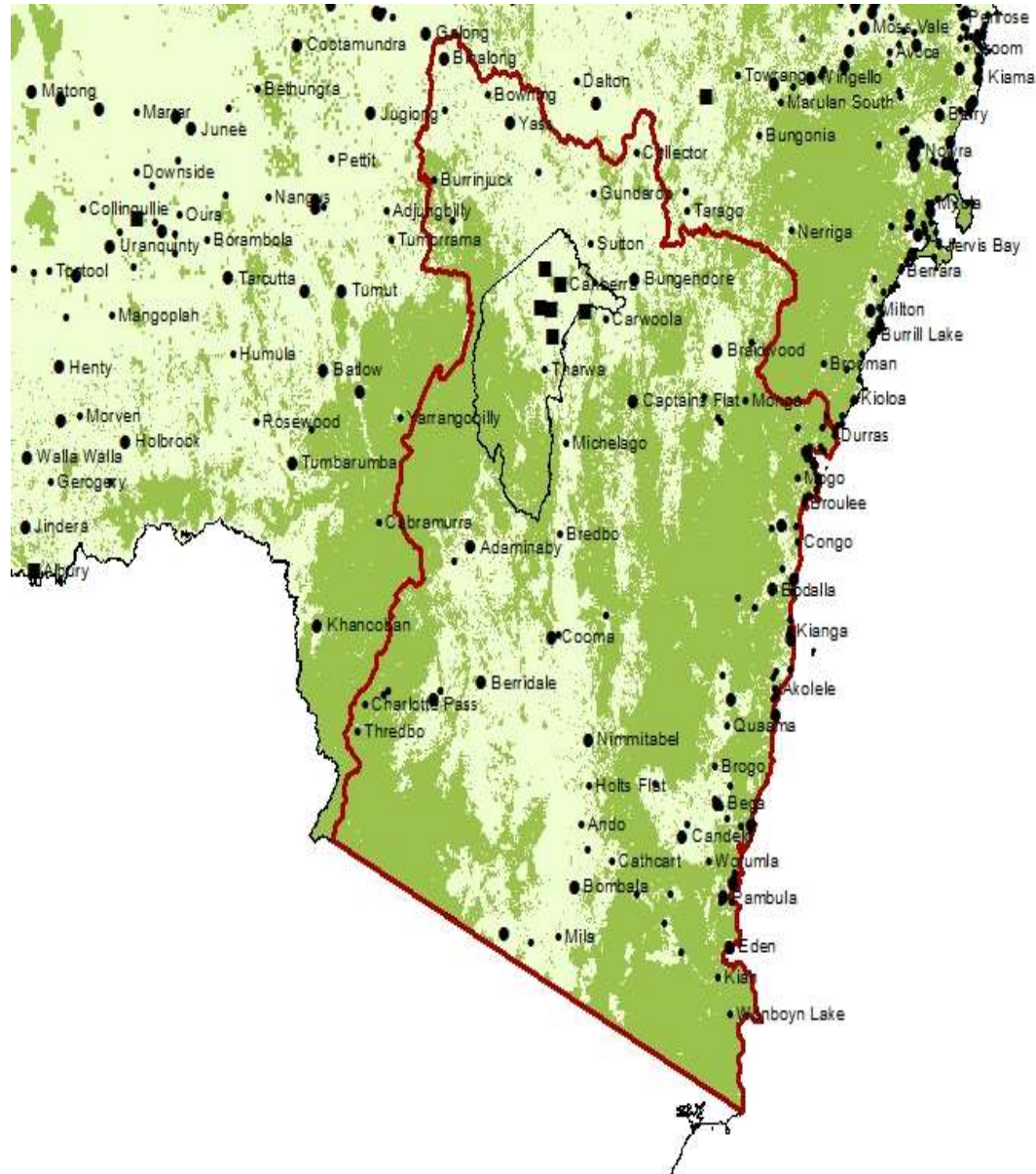
# Land for Wildlife in Kosciuszko to Coast

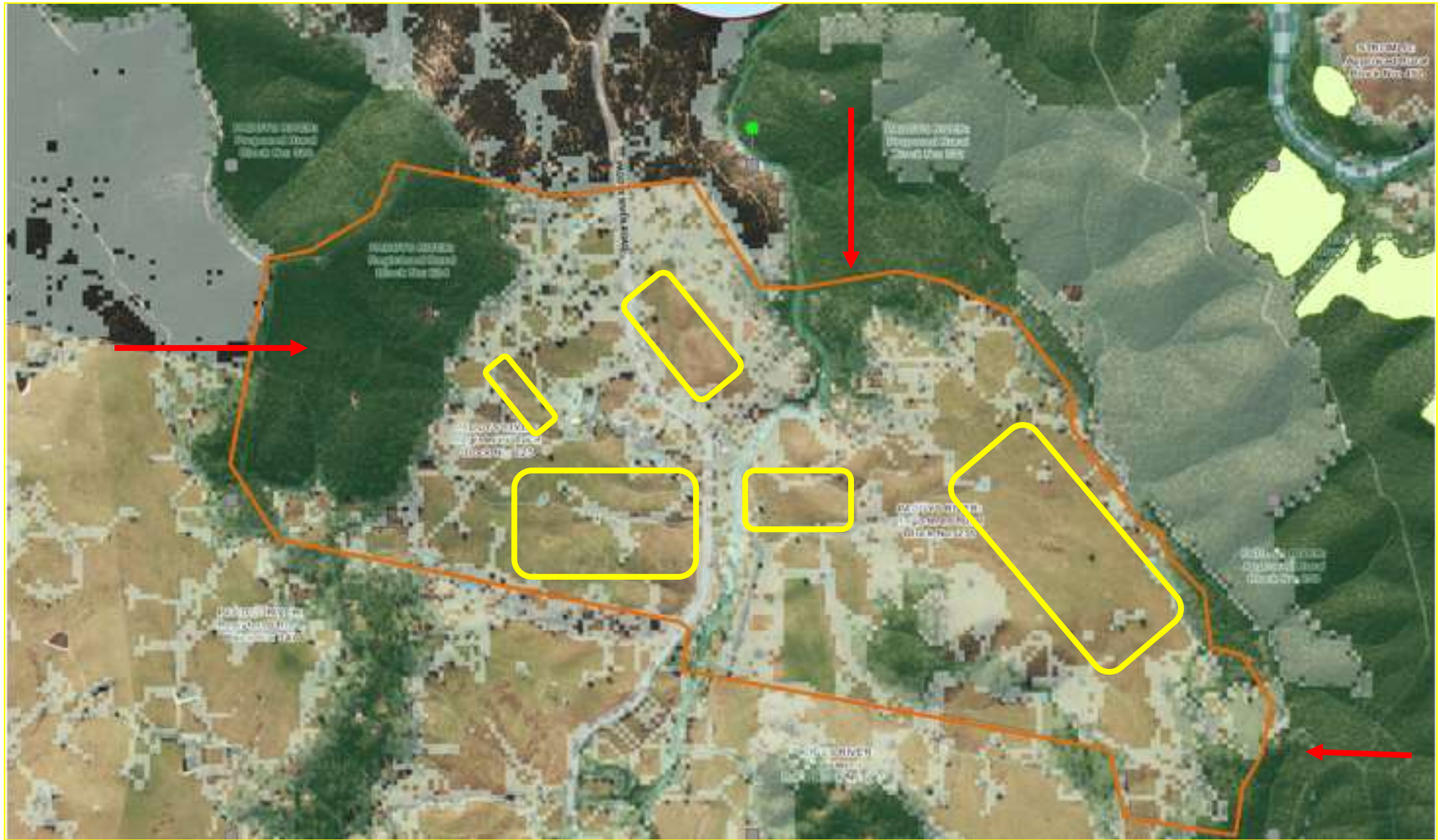


# Great Eastern Ranges



# K2C Region





## **LAND FOR WILDLIFE**

- Voluntary, non-legally binding registration scheme that aims to assist landholders to maintain wildlife habitats on their land
- Does not change the legal status of the property
- Empowers and encourages landholders to manage all or part of their property in an environmentally sustainable way

## **Land for Wildlife Objectives**

Enhance connectivity for wildlife in the highly modified landscapes of the region and the wider GER corridor.

Create natural havens for wildlife on private property

Form wildlife links between animal habitats

Empower and support landholders to manage their land sustainably

Provide advice on how to integrate wildlife conservation into the property's usual management

## Benefits of Joining LFW

- Free Environmental Property Assessment for Landholders
- Access to a network of like-minded people, current research and invitations to workshops
- Access to funding, support and advice on natural resource management
- Support of the Great Eastern Ranges / Kosciuszko to Coast Partnership

# What Happens during a LFW assessment?



















# What is Habitat?











# Grasmere Woodland Hovells Creek

Desk top research including:

- Six Maps
- EPBC Act Protected Matters Report
- Bionet Atlas of NSW Wildlife Report

Field Assessment (Flora and fauna survey)

Discussion of management issues, enhancing habitat for wildlife and connectivity.



Baker Woodland Hovells Creek

Boatowa Rd

Frogmore Rd

© 2016 Google


Image © 2016 CNES / Astrium

Google Earth

720 m

2003

Imagery Date: 10/14/2016 lat -34.044828° lon 148.887886° elev 346 m eye alt 3.69 km



# **Land for Wildlife in K2C**

130 properties  
27669.92 hectares



